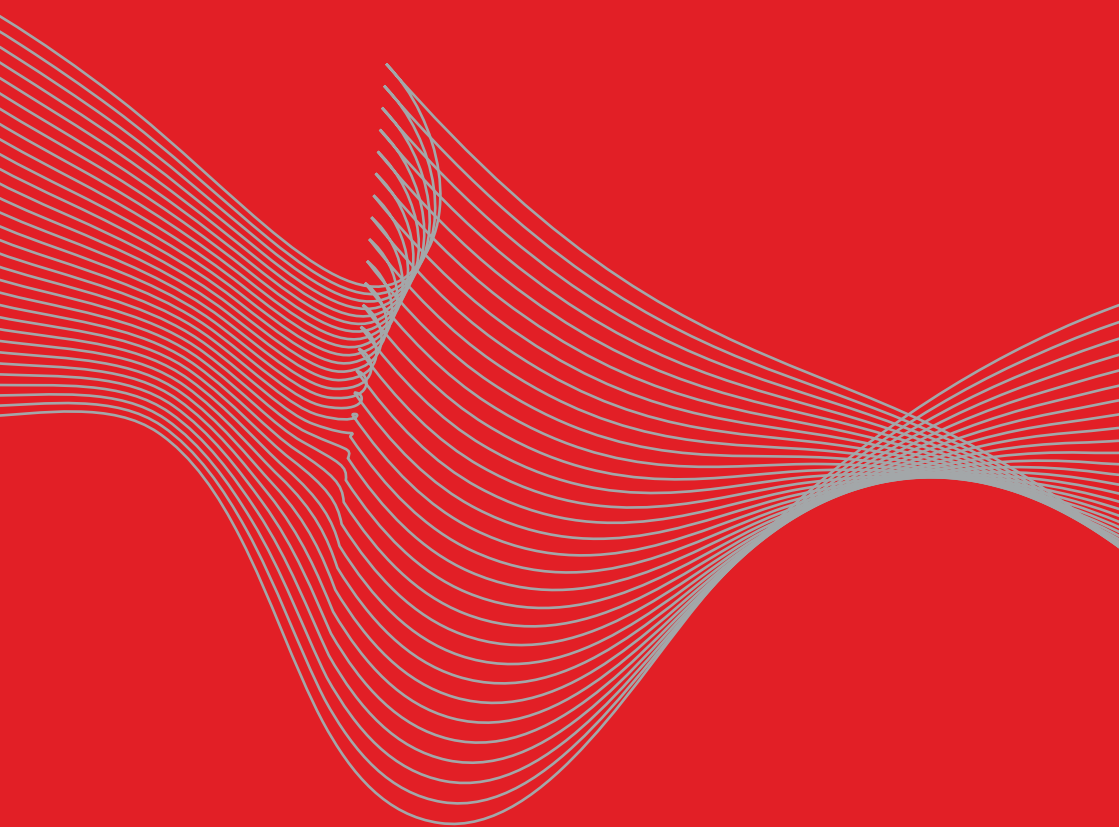


MS  *Amlin*



Reinsurance



Continuity is... at the heart of everything we do.

MS Amlin is part of the global top-10 insurance Group MS&AD. With a 300-year record and more than 2,000 people in over 26 locations worldwide, we deliver continuity for businesses facing the most complex and demanding risks.

MS Amlin at a glance

£3,005m

2016 Gross written premium

£2,908m

2016 Net tangible assets¹

+20yrs

Wealth of experience
Senior Management average years industry experience

83%

2016 reinsurance client retention ratio

+10yrs

Trusted partners
Average number of years partnering with our top 50 reinsurance clients

OVER £100m

Claims services
Amount of funds settled using MS Amlin Advance to date

Financial strength

MS&AD Group	Syndicate 2001	MS Amlin AG
A+ (Stable) AM Best	A (Excellent) AM Best	A (Excellent) AM Best
A+ (Stable) S&P	4+ (Stable) ² S&P	A (Stable) S&P
A1 (Stable) Moody's	A1 (Stable) Moody's	A1 (Stable) Moody's

¹ For further information on net tangible assets please see MS Amlin plc Annual Report 2016 on pages 15-16

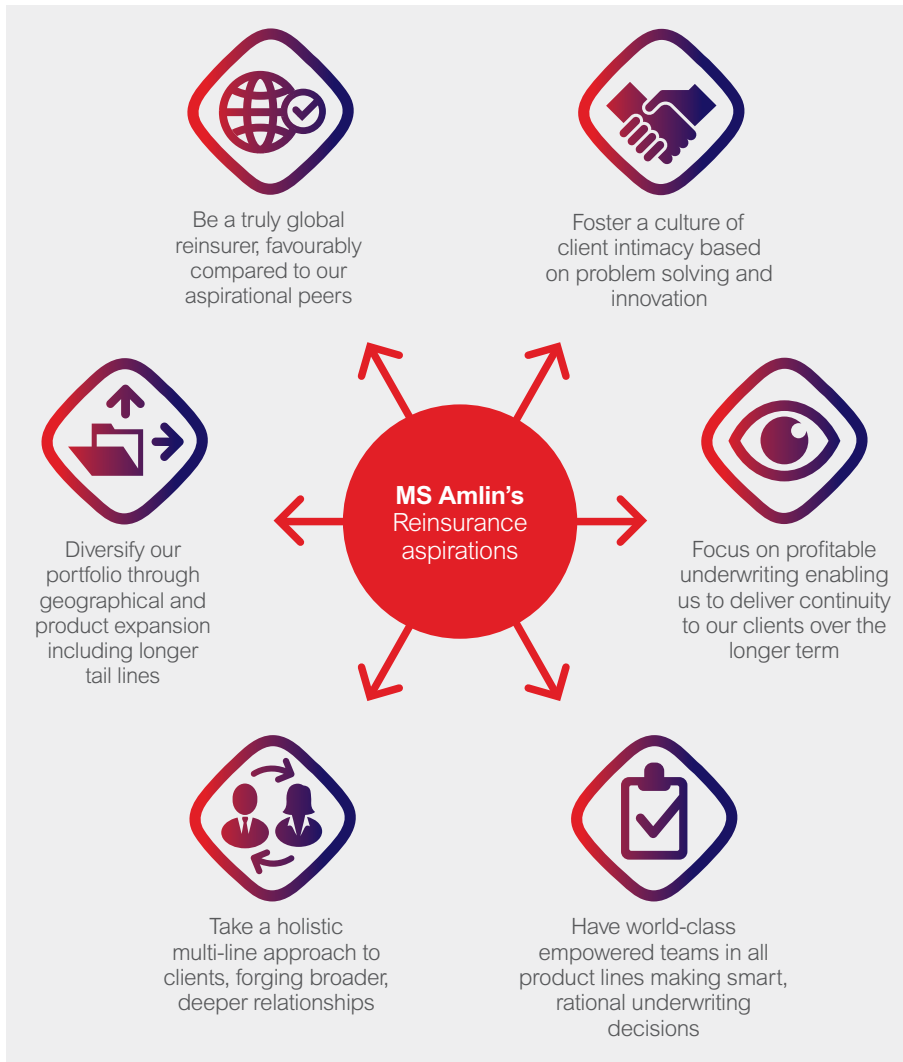
² Lloyd's syndicate assessment

Continuing strength in an era of change

We have a strong platform...

- 01** Client-centric structure, enabling us to forge deeper, more meaningful relationships
- 02** Culture of empowered underwriters with continued investment in underwriting expertise
- 03** Global presence led by an experienced management team
- 04** Increased collaboration with Leadenhall Capital Partners (LCP)
We own 75% of shareholding
- 05** Powerful combination with MS&AD Group
Fully integrated with MS Frontier during 2016

...from which to reach our aspirations



Our team of experts understand your world



James Few
Global Managing Director, Reinsurance
+44 (0)20 7746 1987
james.few@msamlin.com



Dominic Peters
CUO Reinsurance and Joint Active Underwriter Syndicate 2001
+44 (0)20 7746 1851
dominic.peters@msamlin.com



Robert Wyatt
CEO MS Amlin AG Bermuda Branch
+1 441 248 1519
robert.wyatt@msamlin.com



Gregoire Mauchamp
CEO MS Amlin AG and Head of NextGen RI
+41 44 389 4070
gregoire.mauchamp@msamlin.com



Ly Lam
COO & Head of Strategy, Reinsurance
+44 (0)20 7746 7251
ly.lam@msamlin.com



Steve Harlow
Global Head of Claims, Reinsurance
+44 (0)20 7746 1757
steve.harlow@msamlin.com

Accessible, whenever
you need us

We have offices in multiple
locations, so wherever you are,
you can expect the support
of a team that speaks your
language, understands your
priorities and is familiar with
local markets and customs.

01. Miami, FL

**MS Amlin Reinsurance
Managers Inc.**
1221 Brickell Ave, Suite 2110,
Miami, Florida, 33131
T: +1 786 878 5930

02. Summit, NJ

MS Amlin Re Managers, Inc.
1 DeForest Avenue Summit,
New Jersey 07901
T: +1 908 516 3887

03. Hamilton

MS Amlin AG Bermuda Branch
141 Front Street,
Hamilton,
HM 19 Bermuda
T: +1 441 248 1500

04. London

MS Amlin Underwriting Limited
122 Leadenhall St,
London, EC3V 4AG
T: +44 20 7746 1000

05. Zurich

MS Amlin AG
Kirchenweg 5,
8008 Zurich,
Switzerland
T: +41 44 389 4000

06. Mumbai

MS Amlin (India) Private Limited
Level 8, Vibgyor Towers, Trident
Road, Bandra Kurla Complex,
Mumbai 400051, India
T: +91 22 4090 7144



07. Singapore

MS Amlin Asia Pacific Pte Limited
138 Market Street,
#03-01 CapitaGreen,
Singapore, 048946
T: +65 6557 0580

08. Kuala Lumpur

MS Amlin AG Labuan Branch
Lot 14(A), 14th Floor, UBN Tower,
10 Jalan P.Ramlee, 50250 Kuala
Lumpur, Malaysia
T: +603 2715 1080

09. Shanghai

**MS Amlin Lloyd's Insurance
Company (China) Limited**
33rd Floor Azia Center,
1233 Lujiazui Ring Road,
Pudong Shanghai, 200120
T: +86 21 6162 8200

Offering a broad product range

- Agriculture
- Aviation
- Casualty
- Credit & Surety
- Engineering
- Marine
- Mortgage Risk
- Motor
- Personal Accident
- Political Risks
- Property Catastrophe
- Property Proportional
- Property Risk
- Terrorism
- Workers Compensation

Supported by a swift proactive claims service

MS Amlin Advance is one approach we use to deliver our bespoke and dedicated claims service. The initiative involves advancing funds to clients as soon as possible following major loss events. To date we have advanced in excess of GBP100m.

How it works:

- When a catastrophe loss is notified, our underwriting and claims teams collaborate with our client to agree the level at which MS Amlin will offer advanced funds
- Payments may also be advanced in multiple tranches as a complex loss develops
- Funds can be advanced to the Lloyd's broker, international broker or direct to the client
- Communication and partnership with our brokers and clients is paramount



Our award winning service has been recognised for the experience of our people, how accessible they are and the relationships they have with clients.



Strategic partnership with Leadenhall Capital Partners (LCP)

- LCP is an important part of MS Amlin's reinsurance business and is a core element of our on-going strategy
- Assets Under Management of over \$4.2bn (June 2017) across four open-ended funds and two managed accounts
- Collateralised securities with the option of MS Amlin as counterparty

Benefits to clients:

1. Significant capacity
2. Broader product offering
3. Enhanced competitiveness
4. Increased client relevance

Benefits of our structure

-
- 01 Regional focus centred around our clients
 - 02 Improved accessibility for brokers and clients
 - 03 Flexible use of capital base accounting for client preference
 - 04 Global underwriting expertise
 - 05 Centralised functions supporting our teams client approach



MS Amlin
The Leadenhall Building
122 Leadenhall Street
London
EC3V 4AG

Tel: +44 (0)20 7746 1000

msamlin.com

© August 2017. The information contained herein is intended to be for informational purposes only and is correct at the time of printing. This is not, and is not intended to be construed as, an offering of MS Amlin securities in the United States or in any other jurisdictions where such offers may be unlawful. The services and products mentioned may not be available in the United States or in jurisdictions where Lloyd's does not have a trading license. Potential insurers should consult with an appropriately licensed broker in their area for further information. MS Amlin Underwriting Limited is authorised by the Prudential Regulation Authority and regulated by the Financial Conduct Authority and the Prudential Regulation Authority under reference number 204918. Registered office The Leadenhall Building, 122 Leadenhall Street, London EC3V 4AG. Registered in England. Company No. 02323018.

MS Amlin AG is a Swiss reinsurance company with its registered office at Kirchenweg 5, 8008 Zurich, Switzerland and branches located at 141 Front Street, Hamilton, HM19, Bermuda and Level 13(B) & (C1), Main Office Tower Financial Park Labuan, Jalan Merdeka, 87000 W.P. Labuan, Malaysia. It is authorised and regulated by Swiss Financial Market Supervisory Authority (FINMA). The Bermuda branch is regulated by the Bermuda Monetary Authority (BMA) and the Labuan branch is regulated by the Labuan FSA. MS Amlin AG does not carry on business in the United States, the United Kingdom or other locations where prohibited by applicable laws and regulations. All enquiries regarding reinsurance products and services offered by MS Amlin AG should be directed to the relevant office in Switzerland, Bermuda or Labuan.

MS Amlin Asia Pacific Pte Limited is approved by the Monetary Authority of Singapore to underwrite on behalf of the members of Syndicate 2001 at Lloyd's. Registered in Singapore No. 200711910C. Registered office 138 Market Street #03-01 CapitaGreen Singapore 048946.